

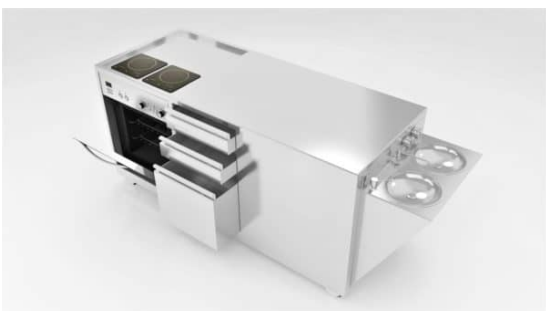


COMMERCIAL MOBILE KITCHEN WITH TWO INDUCTION COOKTOPS

This model Mobile Kitchen has two induction cooktops, a convection oven, customised electrics, two retractable sinks, a hot waste system and services. In addition, lockable drawers and cupboards are integrated into the platform.

They are ideal for preparing and cooking food and can be used for catering or as a satellite kitchen. They are designed for single-handed operations and can be set up and ready to operate in minutes.

One person can easily wheel the Mobile Kitchen between rooms through doorways, corridors, and elevators. They may also be geographically relocated by towing on a trailer behind a small vehicle.



KEY FEATURES

- Fits through standard doorways and into elevators
- Single-handed operation
- Can be used indoors and out
- Ready to cook in minutes
- Commercial convection oven
- Two-zone induction cooktop

SPECIFICATIONS

- Manufactured in 304 premium grade stainless-steel
- Stainless-steel lockable drawers
- Two retractable sinks
- Faucet with automatic cut-off
- Water tank
- Waste tank
- Hot water system
- Water pump
- Plumbing to sink, faucet, water and drain
- Lockable cupboards and drawers
- Electrical cupboard with a lockable door
- Electrical power inclusions – certified to AS3000
- Heavy-duty wheels – 2 fixed; 2 swivels with brakes

WARRANTY

12-month conditional on workmanship

Appliances come with suppliers' warranty

DIMENSIONS

Length:	1850mm
Width:	750mm
Merchandise:	900mm

CONTACT INFORMATION

✉ info@centuryproductsinfo.com ☎ 1300 946 282 (Australia) ☎ +61 7 3105 5974 (Overseas)

📍 Shop 3, 156 Boundary Street West End QLD, Australia 4101 🏢 ABN 87 630 398 926

Copyright © 2019 - 2022 | Century Products. All Rights Reserved.