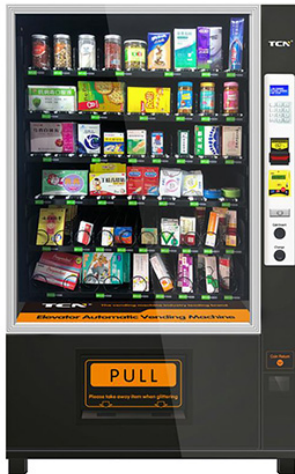




Beverage & Snack Vending Machine

TCN-ELV-11G-BLK



OVERVIEW

Ultra-smooth & fast elevator system suitable for vending fragile products

Easy removal of the cooling unit for maintenance or repairs (unit comes out from the front)

Has the most user-friendly interface (for easy programming & changing settings), pricing etc

DEX protocol for telemetry and cashless payment systems (PayPass, Android pay, Tap-n-Go, etc.)

Drop sensor system for guaranteed delivery or money returned automatically

90-degree door opening for easier refilling

Led lighting (super bright)

Easy spiral adjusting pull & twist (no need to remove tray)

ATM-style keypad for strength and reliability

Adjustable shelving to suit your needs and products

VENDING

Generate sales 24/7

Minimal labour cost or rent business

Customise the layout for your needs

Stock your preferred products

Retain 100% of the profit

National service and technical support

SPECIFICATIONS

High-capacity vending machines

DEX port available

Front Glass Vending machine with cooling

Bill, Coin, Coin Dispenser(MDB Protocol)

Drop sensor system, guarantee delivery

DIMENSIONS

| | |
|-------------------|--|
| Outside: | H: 1946mm, W: 1206mm, D: 850mm |
| Weight: | 460kg |
| Products: | 42~84 |
| Storage: | 420~1240 (dependent on size of goods) |
| Cooling Function: | Compressor refrigeration,4-25°C (adjustable) |
| Rated Voltage: | 110V/220V,60Hz/50Hz |
| Power: | 375W |

OPTIONAL

Conveyor belt option to replace spirals

Remote control by GPRS, management software

Bill acceptor and coin mechanism configured at the factory (MDB Protocol)

Signage wrap

Card reader payment device (Nayax):

- Credit Card
- Apple Pay
- Android Pay
- We ChatPay
- Alipay

STANDARD HELIX CONFIGURATION (VARIOUS CONFIGURATIONS AVAILABLE)

| ITEM | QUANTITY | | | | | | | | | |
|-----------|----------|----|----|----|----|----|----|----|----|----|
| Chips | 7 | 7 | 7 | 7 | 7 | 7 | 7 | 7 | 7 | 7 |
| Chips | 7 | 7 | 7 | 7 | 7 | 7 | 7 | 7 | 7 | 7 |
| Chocolate | 15 | 15 | 15 | 15 | 15 | 15 | 15 | 15 | 15 | 15 |
| Bottles | 5 | 5 | 5 | 5 | 5 | 5 | 5 | 5 | 5 | 5 |
| Cans | 5 | 5 | 5 | 5 | 5 | 5 | 5 | 5 | 5 | 5 |

CONTACT INFORMATION

✉ info@centuryproductsinfo.com ☎ **1300 946 282** (Australia) ☎ **+61 7 3105 5974** (Overseas)

📍 Shop 3, 156 Boundary Street West End QLD, Australia 4101 🏢 ABN 87 630 398 926

Copyright © 2019 - 2022 | Mobile Kitchens, robo-WOK, Gyoza Grills, Vending Machines, Carts. All Rights Reserved.