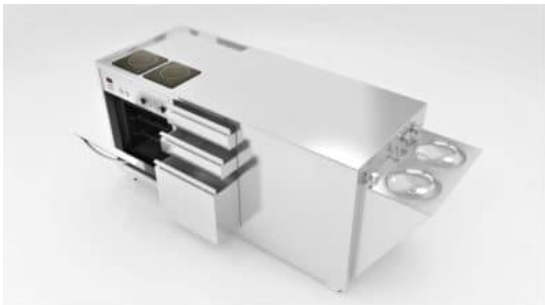


MOBILE KITCHEN WITH TWO INDUCTION COOKTOPS



KEY FEATURES

- Fits through standard doorways and into elevators
- Single-handed operation
- Can be used indoors and out
- Ready to cook in minutes
- Commercial convection oven
- Two-zone induction cooktop

SPECIFICATIONS

- Manufactured in 304 premium grade stainless-steel
- Stainless-steel lockable drawers
- Two retractable sinks
- Faucet with automatic cut-off
- Water tank
- Waste tank
- Hot water system
- Water pump
- Plumbing to sink, faucet, water and drain
- Lockable cupboards and drawers
- Electrical cupboard with a lockable door
- Electrical power inclusions – certified to AS3000
- Heavy-duty wheels – 2 fixed; 2 swivels with brakes

WARRANTY

- 12-month conditional on workmanship
- Appliances come with suppliers' warranty

DIMENSIONS

Length:	1850mm
Width:	750mm
Merchandise:	900mm

CONTACT INFORMATION

✉ info@centuryproductsinfo.com ☎ **1300 946 282** (Australia) ☎ **+61 7 3105 5974** (Overseas)

📍 Shop 3, 156 Boundary Street West End QLD, Australia 4101 🏢 ABN 87 630 398 926

Copyright © 2019 - 2022 | Century Products - Coffee Carts, Cookings Stations, Vending Machines. All Rights Reserved.